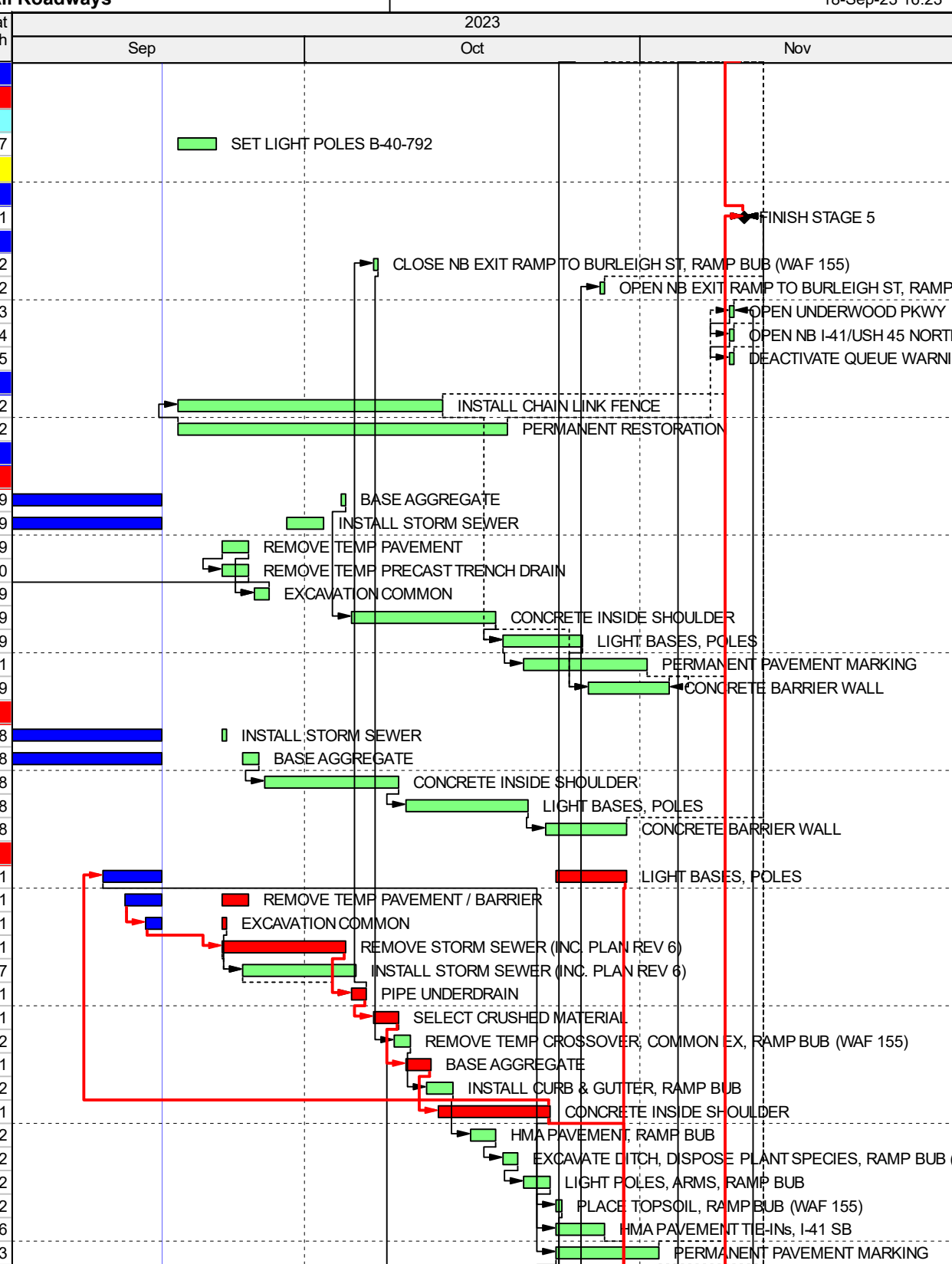


Activity ID	Activity Name	OD	RD	% Comp	Start	Finish	Total Float	Float Path	2023			
									Sep	Oct	Nov	
ZOO IC NORTH LEG AUGUST 2023 UPDATE												
PROJECT DATES												
INTERIM COMPLETION OF WORK (L.1 - L.15)												
PDL.1015	COMPLETE ZOO IC NORTH LEG PROJECT (OCT 29, 2023)	0	0	0%	10-Nov-23	10-Nov-23*	-14	1				◆ COMPLETE ZOO IC NORTH
CONSTRUCTION 1060-33-84, 1060-34-77												
STAGE 2A												
LOCAL ROAD CONSTRUCTION												
NORTH AVE STAGE 1A/1B (STAGE 2 MAINLINE)												
2A.LR1085	SIDEWALK & DRIVEWAYS	12	1	91.67%	04-Aug-22 A	18-Sep-23	-10	1	█			
STAGE 3 (FINISH BY 03/15/2023)												
SIGN STRUCTURES												
S-40-67 NB SIGN BRIDGE STA 394NS + 70.00												
2A.SS1020	INSTALL SIGN TRUSS	2	2	0%	19-Sep-23	21-Sep-23	-10	1	█			
STAGE 4 (FINISH BY 10/02/2023)												
MILESTONES												
4.MS1010	FINISH STAGE 4	0	0	0%	28-Oct-23	28-Oct-23	-1	23				◆ FINISH STAGE 4
SITWORK ACTIVITIES												
4.SW1045	INSTALL FTMS, I-41 SB	15	3	80%	05-May-23 A	22-Sep-23	-10	1	█			
4.SW1050	INSTALL LIGHTING, SB	10	3	70%	05-Jun-23 A	22-Sep-23	-10	1	█			
ROADWORK ACTIVITIES												
CENTER ST - NPL (STA 462+00NS - STA 486+00NS) 1												
4.1050	CONCRETE PAVEMENT, RAMP BUC	14	2	85.71%	07-Aug-23 A	25-Sep-23	-10	1	█			
NORTH AVE - CENTER ST (STA 436+00NS - STA 462+00NS) 2												
4.2070	LIGHT POLE BASES	4	3	25%	14-Aug-23 A	22-Sep-23	-10	2	█			
LOCAL ROAD CONSTRUCTION												
NORTH AVE STAGE 2A - 2B (STAGE 4)												
4.LR2060	INSTALL LIGHT POLES	10	10	0%	19-Sep-23	02-Oct-23	-1	24	█			
4.LR2070	INSTALL LUMINAIRES	5	5	0%	04-Oct-23	09-Oct-23	-1	24	█			
4.LR2075	INSTALL TRAFFIC SIGNALS	18	18	0%	04-Oct-23	27-Oct-23	-1	24	█			
4.LR2100	INSTALL UNDER DECK LIGHTING - NORTHAVE BRIDGE	5	5	0%	10-Oct-23	16-Oct-23	0	26	█			
4.LR1035	HMA SURFACE LAYER	5	5	0%	18-Oct-23	23-Oct-23	0	26	█			
4.LR1040	PAVEMENT MARKING	3	3	0%	24-Oct-23	27-Oct-23	0	26	█			
4.LR1045	PERMANENT SIGNS	3	3	0%	24-Oct-23	27-Oct-23	0	26	█			
4.LR2080	TRAFFIC SIGNAL TESTING	1	1	0%	28-Oct-23	28-Oct-23	-1	24	█			
MAYFAIR RD STAGE 2A - 2B (STAGE 4)												
4.LR2000	SAW CONSTRUCTION LIMITS	1	1	0%	08-Sep-23 A	19-Sep-23	-1	23	█			
4.LR2010	BASE AGG	2	1	50%	11-Sep-23 A	23-Sep-23	-1	23	█			
4.LR2005	MILL EXISTING ASPHALT	2	2	0%	21-Sep-23	22-Sep-23	-1	23	█			
4.LR2015	CURB & GUTTER	8	8	0%	25-Sep-23	05-Oct-23	-1	23	█			
4.LR2025	CONCRETE DRIVEWAYS	5	5	0%	06-Oct-23	12-Oct-23	-1	23	█			
4.LR2030	SIDEWALK	12	12	0%	13-Oct-23	28-Oct-23	-1	23	█			
RETAINING / NOISE WALL ACTIVITIES												
N-40-85 RAMP NOG, ON R-40-570												
4.NW1000	SET STRUCTURE MOUNTED POSTS N-40-85	14	10	28.57%	26-Jul-23 A	02-Oct-23	0	25	█			
4.NW1005	SET PANELS N-40-85	18	18	0%	04-Oct-23	27-Oct-23	0	25	█			
SIGN STRUCTURES, STAINING												
S-40-786 MEDIAN BUTTERFLY, STA 482NS+00												
4.SS6090	CONCRETE STAINING, S-40-786	1	1	0%	26-Oct-23	26-Oct-23	0	16	█			
S-40-442 NB SIGN BRIDGE STA 371NS + 5.00-1												
4.SS6095	CONCRETE STAINING, S-40-442	1	1	0%	06-Nov-23	06-Nov-23	-7	7	█			

█ Remaining Level of Effort █ Remaining Work
█ Actual Level of Effort █ Critical Remaining Work
█ Actual Work ◆ Milestone

TASK filter: Float Paths.

Activity ID	Activity Name	OD	RD	% Comp	Start	Finish	Total Float	Float Path	2023		
									Sep	Oct	Nov
BRIDGE STRUCTURE ACTIVITIES											
B-40-792 RAMP NOG (SB EXIT TO EB NORTH AVE)											
SUPERSTRUCTURE B-40-792											
4.BS3095	SET LIGHT POLES B-40-792	3	3	0%	19-Sep-23	22-Sep-23	-7	47			
STAGE 5 (FINISH BY 10/02/2023)											
MILESTONES											
5.MS1010	FINISH STAGE 5	0	0	0%	10-Nov-23	10-Nov-23	-14	1			
TRAFFIC CONTROL ACTIVITIES											
5.TC1020	CLOSE NB EXIT RAMP TO BURLEIGH ST, RAMP BUB (WAF 155)	1	1	0%	07-Oct-23	07-Oct-23	-1	22			
5.TC1025	OPEN NB EXIT RAMP TO BURLEIGH ST, RAMP BUB (WAF 155)	1	1	0%	28-Oct-23	28-Oct-23	-1	22			
5.TC1005	OPEN UNDERWOOD PKWY	1	1	0%	09-Nov-23	09-Nov-23	-13	3			
5.TC1010	OPEN NB I-41/USH 45 NORTH AVE RAMPS	1	1	0%	09-Nov-23	09-Nov-23	-13	4			
5.TC1015	DEACTIVATE QUEUE WARNING SYSTEM	1	1	0%	09-Nov-23	09-Nov-23	-13	5			
SITWORK ACTIVITIES											
5.SW1005	INSTALL CHAIN LINK FENCE	18	18	0%	19-Sep-23	13-Oct-23	-2	12			
5.SW1010	PERMANENT RESTORATION	22	22	0%	19-Sep-23	19-Oct-23	-2	12			
ROADWORK ACTIVITIES											
SPL TO MAYFAIR RD (STA 371+00NS - STA 414+00NS)											
5.1040	BASE AGGREGATE	2	1	50%	25-Aug-22 A	04-Oct-23	-5	9			
5.1025	INSTALL STORM SEWER	7	3	57.14%	16-Jan-23 A	02-Oct-23	-5	9			
5.1005	REMOVE TEMP PAVEMENT	2	2	0%	23-Sep-23	25-Sep-23	-5	9			
5.1010	REMOVE TEMP PRECAST TRENCH DRAIN	2	2	0%	23-Sep-23	25-Sep-23	-5	10			
5.1015	EXCAVATION COMMON	2	2	0%	26-Sep-23	27-Sep-23	-5	9			
5.1045	CONCRETE INSIDE SHOULDER	10	10	0%	05-Oct-23	18-Oct-23	-5	9			
5.1050	LIGHT BASES, POLES	6	6	0%	19-Oct-23	26-Oct-23	-5	9			
5.1060	PERMANENT PAVEMENT MARKING	8	8	0%	21-Oct-23	01-Nov-23	-3	11			
5.1055	CONCRETE BARRIER WALL	6	6	0%	27-Oct-23	03-Nov-23	-5	9			
MAYFAIR RD - NORTH AVE (STA 414+00NS - STA 432+00NS)											
5.2020	INSTALL STORM SEWER	5	1	80%	12-Sep-22 A	23-Sep-23	-2	18			
5.2035	BASE AGGREGATE	2	2	0%	23-Sep-22 A	26-Sep-23	-2	18			
5.2040	CONCRETE INSIDE SHOULDER	9	9	0%	27-Sep-23	09-Oct-23	-2	18			
5.4070	LIGHT BASES, POLES	9	9	0%	10-Oct-23	21-Oct-23	-2	18			
5.4075	CONCRETE BARRIER WALL	6	6	0%	23-Oct-23	30-Oct-23	-2	18			
CENTER ST - NPL (STA 462+00NS - STA 486+00NS)											
5.4050	LIGHT BASES, POLES	6	5	16.67%	12-Sep-23 A	30-Oct-23	-10	1			
5.4005	REMOVE TEMP PAVEMENT / BARRIER	3	2	33.33%	14-Sep-23 A	25-Sep-23	-10	1			
5.4010	EXCAVATION COMMON	2	1	50%	16-Sep-23 A	23-Sep-23	-10	1			
5.4015	REMOVE STORM SEWER (INC. PLAN REV 6)	8	8	0%	23-Sep-23	04-Oct-23	-10	1			
5.4020	INSTALL STORM SEWER (INC. PLAN REV 6)	8	8	0%	25-Sep-23	05-Oct-23	-3	17			
5.4025	PIPE UNDERDRAIN	2	2	0%	05-Oct-23	06-Oct-23	-10	1			
5.4030	SELECT CRUSHED MATERIAL	2	2	0%	07-Oct-23	09-Oct-23	-10	1			
5.4090	REMOVE TEMP CROSSOVER, COMMON EX, RAMP BUB (WAF 155)	2	2	0%	09-Oct-23	10-Oct-23	-1	22			
5.4035	BASE AGGREGATE	2	2	0%	10-Oct-23	12-Oct-23	-10	1			
5.4095	INSTALL CURB & GUTTER, RAMP BUB	3	3	0%	12-Oct-23	14-Oct-23	-1	22			
5.4040	CONCRETE INSIDE SHOULDER	8	8	0%	13-Oct-23	23-Oct-23	-10	1			
5.4100	HMA PAVEMENT, RAMP BUB	2	2	0%	16-Oct-23	18-Oct-23	-1	22			
5.4105	EXCAVATE DITCH, DISPOSE PLANT SPECIES, RAMP BUB (WAF 155)	2	2	0%	19-Oct-23	20-Oct-23	-1	22			
5.4110	LIGHT POLES, ARMS, RAMP BUB	2	2	0%	21-Oct-23	23-Oct-23	-1	22			
5.4115	PLACE TOPSOIL, RAMP BUB (WAF 155)	1	1	0%	24-Oct-23	24-Oct-23	-1	22			
5.4045	HMA PAVEMENT TIE-INS, I-41 SB	4	4	0%	24-Oct-23	28-Oct-23	-9	6			
5.4060	PERMANENT PAVEMENT MARKING	7	7	0%	24-Oct-23	02-Nov-23	-4	13			



■ Remaining Level of Effort ■ Remaining Work
■ Actual Level of Effort ■ Critical Remaining Work
■ Actual Work ◆ Milestone

TASK filter: Float Paths.

Activity ID	Activity Name	OD	RD	% Comp	Start	Finish	Total Float	Float Path	2023		
									Sep	Oct	Nov
5.4065	PERMANENT SIGNING	7	7	0%	24-Oct-23	02-Nov-23	-4	15			PERMANENT SIGNING
5.4120	RESTORATION, RAMP BUB (WAF 155)	1	1	0%	26-Oct-23	26-Oct-23	-1	22			RESTORATION, RAMP BUB (WAF 155)
5.4125	PAVEMENT MARKING, RAMP BUB	1	1	0%	27-Oct-23	27-Oct-23	-1	22			PAVEMENT MARKING, RAMP BUB
5.4055	CONCRETE BARRIER WALL	8	8	0%	01-Nov-23	10-Nov-23	-10	1			CONCRETE BARRIER WALL
LOCAL ROADS		34	34	0%	23-Sep-23	09-Nov-23	-9				
UNDERWOOD PKWY (STAGE 5)		34	34	0%	23-Sep-23	09-Nov-23	-9				
5.LR1000	SAW CONSTRUCTION LIMITS	1	1	0%	23-Sep-23	23-Sep-23	-9	3			SAW CONSTRUCTION LIMITS
5.LR1005	REMOVE PAVEMENT	2	2	0%	25-Sep-23	26-Sep-23	-9	3			REMOVE PAVEMENT
5.LR1010	BASE AGG	2	2	0%	27-Sep-23	29-Sep-23	-9	3			BASE AGG
5.LR1015	CURB & GUTTER	6	6	0%	30-Sep-23	07-Oct-23	-9	3			CURB & GUTTER
5.LR1020	HMA PAVEMENT	2	2	0%	09-Oct-23	10-Oct-23	-9	3			HMA PAVEMENT
5.LR1035	SIDEWALK	6	6	0%	12-Oct-23	19-Oct-23	-9	3			SIDEWALK
5.LR1040	SALVAGE TOPSOIL	6	6	0%	20-Oct-23	27-Oct-23	-9	3			SALVAGE TOPSOIL
5.LR1045	RESTORATION	7	7	0%	28-Oct-23	06-Nov-23	-9	3			RESTORATION
5.LR1025	PAVEMENT MARKING	1	1	0%	08-Nov-23	08-Nov-23	-9	3			PAVEMENT MARKING
5.LR1030	PERMANENT SIGNS	2	2	0%	08-Nov-23	09-Nov-23	-9	3			PERMANENT SIGNS
SIGN STRUCTURES		19	19	0%	10-Oct-23	04-Nov-23	-6				
S-40-786 MEDIAN BUTTERFLY, STA 482NS+00		11	11	0%	10-Oct-23	24-Oct-23	-1				
5.SS1000	MOBILIZE & DRILL SHAFT	2	2	0%	10-Oct-23	12-Oct-23	-7	7			MOBILIZE & DRILL SHAFT
5.SS1005	F/R/P FOOTING	1	1	0%	13-Oct-23	13-Oct-23	-1	14			F/R/P FOOTING
5.SS1010	CURE FOOTING	3	3	0%	14-Oct-23	18-Oct-23	-1	14			CURE FOOTING
5.SS1015	F/R/P SIGN STRUCTURE	3	3	0%	19-Oct-23	21-Oct-23	-1	14			F/R/P SIGN STRUCTURE
5.SS1020	INSTALL SIGN TRUSS	2	2	0%	23-Oct-23	24-Oct-23	-1	14			INSTALL SIGN TRUSS
S-40-442 NB SIGN BRIDGE STA 371NS + 5.00		19	19	0%	10-Oct-23	04-Nov-23	-6				
2A.SS2385	MOBILIZE, TEMP SHORING, & DRILL SHAFT	7	7	0%	10-Oct-23	19-Oct-23	-7	7			MOBILIZE, TEMP SHORING, & DRILL SHAFT
2A.SS2390	F/R/P FOOTING	2	2	0%	20-Oct-23	21-Oct-23	-7	7			F/R/P FOOTING
2A.SS2395	CURE FOOTING	3	3	0%	22-Oct-23	24-Oct-23	-9	7			CURE FOOTING
2A.SS2400	F/R/P SIGN STRUCTURE	6	6	0%	26-Oct-23	02-Nov-23	-7	7			F/R/P SIGN STRUCTURE
2A.SS1120	INSTALL SIGN TRUSS	2	2	0%	03-Nov-23	04-Nov-23	-7	7			INSTALL SIGN TRUSS
2A.SS1125	INSTALL DMS	2	2	0%	03-Nov-23	04-Nov-23	-6	8			INSTALL DMS